

CATALOG 2010/2011



**MEGA  
HOT**  
Professional Series®

# DRYERS



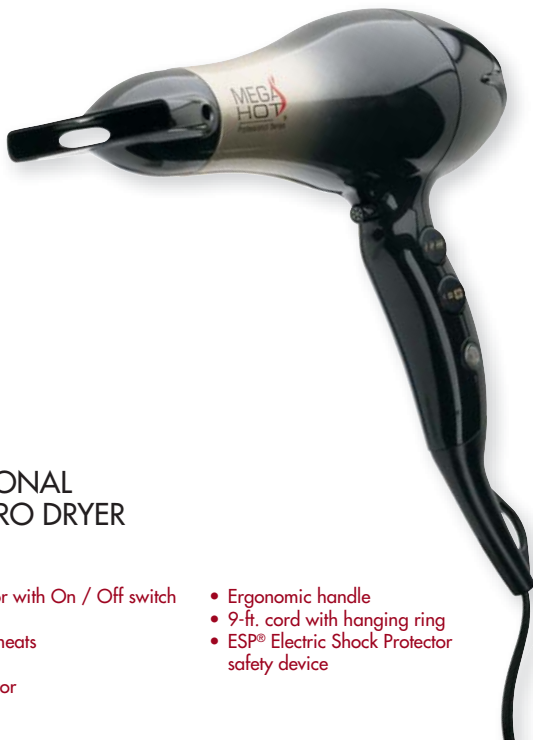
**MH2154**  
PROFESSIONAL  
1875 WATT IONIC  
TURBO DRYER  
with Tourmaline

- Ultra-light 10 oz.
- Tourmaline conditioning
- 2 speeds and 6 heat settings
- Cool shot button
- Removable air intake grille
- Air concentrator and diffuser
- 8-ft. cord with hanging ring
- **ESP**® Electric Shock Protector safety device



**MH2257**  
PROFESSIONAL  
IONIC TOURMALINE  
DRYER

- Ionic generator with On / Off switch
- Tourmaline conditioning
- 1875 watt
- 2 speeds / 4 heat settings
- Cool shot
- Air diffuser
- Air concentrator
- Comfort grip handle
- 9-ft. cord with hanging ring
- **ESP**® Electric Shock Protector safety device



**MH2255**  
PROFESSIONAL  
IONIC EURO DRYER

- Ionic generator with On / Off switch
- 1875 watt
- 2 speeds / 6 heats
- Cool shot
- Air concentrator
- Ergonomic handle
- 9-ft. cord with hanging ring
- **ESP**® Electric Shock Protector safety device



**MH3203**  
PROFESSIONAL  
1875 WATT  
LIGHTWEIGHT DRYER  
with Tourmaline

- 1875 watt
- Ultra-light 11.6 oz.
- Tourmaline-infused air-exit grille
- 2 speeds and 3 heat settings
- Cool touch button to set the hair
- Removable rear grille for easy cleaning
- Air concentrator and diffuser
- 8-ft. cord with hanging ring

**MEGA  
HOT**  
Professional Series

A new Culture of Hair awaits...The Mega Hot® Hair Culture™.

Mega Hot® is leading the way to promote hair fashion with quality products that never go out of style. The red hot look of our dryers, curling irons, and straightening irons reflect our image of timeless beauty and passionate professionalism. The Mega Hot® Hair Culture is an expression of affordable luxury, individual style, and performance-driven products that are meant to stand the test of time. Step into a new culture of hair. Mega Hot®.

# STRAIGHTENING IRONS



**MH2024**  
PROFESSIONAL  
1" ACCUSILVER™ LCD  
STRAIGHTENING IRON  
with Tourmaline



- 1" tourmaline-infused ceramic heating plates
- AccuSilver™ infused for inhibiting growth of bacteria
- Temperature range: 200°F–450°F
- Quick heat/quick recovery
- Easy-to-read LCD
- Handle lock
- Finger rests
- One-touch temperature select buttons
- 9-ft. swivel cord



**MH2057**  
DIGITAL SLIM  
STRAIGHTENING IRON  
with Tourmaline



- 1" AccuSilver™ tourmaline-infused ceramic heating plates
- Temperature range: 200°F–450°F
- Easy-to-read LCD
- Highly efficient professional heater
- Handle lock
- One-touch temperature select buttons
- 9-ft. swivel cord



**MH3004**  
1" CERAMIC  
STYLING IRON



- 1" ceramic plates retain heat and give even heat distribution
- Rheostat control for temperature variation
- Quick 60-second heat-up
- Temperature range 200°F–400°F
- 4-hour auto shut-off
- Worldwide dual voltage



**MH3003**  
1" PROFESSIONAL  
SLIM CERAMIC  
STRAIGHTENING IRON



- 1" ceramic floating plates for optimum control and conditioning
- Cool tip for safety
- Plate Lock/Unlock switch on hinge
- Rheostat control for temperature variation
- On/Off power switch for easy operation
- Temperature range 200°F–400°F
- 4-hour auto shut-off
- Worldwide dual voltage



**MH1020**  
TRAVEL  
FOLDING IRON



- 3/8" slim ceramic heating plates
- High heat to 420°F
- Quick 60-second heat-up
- Folds for storage
- Power indicator light
- Handle lock
- Worldwide dual voltage
- Thermal pouch with heat resistance of 430°F
- 9-ft. swivel cord



**MH3001**  
THE HOTTIE  
STRAIGHTENING IRON



- 1/2" ceramic plates
- 20% longer plates
- Extreme temperature of 390°F
- Quick 60-second heat-up
- Dual voltage...Take your hottie everywhere
- Power indicator light
- On/Off switch
- Free travel pouch
- 8-ft. swivel cord with hanging ring

# CURLING IRONS

**MH3114, MH3115, MH3116, MH3117**  
PROFESSIONAL  
CERAMIC CURLING IRONS

- Ceramic red plated barrel
- Rheostat temperature controls with ranges from 240°F–430°F
- On indicator light
- Cool touch safety tip and thumb press
- Worldwide dual voltage
- Foldaway safety stand
- 8-ft. swivel cord



Temperatures  
up to **430°F**

**MH3117**  
1 1/2"

**MH3116**  
1 1/4"

**MH3115**  
1"

**MH3114**  
3/4"



**MEGA  
HOT**  
Professional Series®

**Mega Hot® technology explained. . .**

**Ceramic**

- Helps minimize heat damage
- Counteracts frizz
- Leaves hair smooth

**Ionic Generator**

- Helps to seal the hair cuticle, reducing frizz
- Helps reduce drying time
- Leaves hair smoother and silkier
- Seals-in moisture

**Tourmaline**

- Helps eliminate static electricity and frizz
- Far-infrared heat gently dries hair quicker
- Natural source of negative ions that generate infrared heat with ionic properties

For a complete view of all **Mega Hot®** styling tools,  
go to [www.BelsonProducts.com](http://www.BelsonProducts.com)  
or call **800.327.8384** for the distributor nearest you