

**2010**  
**2011**  
catalog



**COMARE®**

COMARE

# COMARE®

The Comare® Collection of brushes, combs, and teasers fit every stylist's need. Comare constantly introduces new, innovative hair tools, each designed ergonomically for less wrist stress and easier styling. Every Comare product has been tested by stylists to ensure the highest quality standards. The Comare Collection = Tools for any styling need.



# THERMAL COLLECTION

Thermal brushes provide maximum heat distribution, eliminating hot and cold spots for a quicker dry time.



## TUXEDO BRUSH COLLECTION ROUND IONIC / CERAMIC THERMALS

- Ion-saturated bristles set into thermal ceramic barrels protect hair, giving it maximum shine and static-free luster.
- Comfort Grip™ handles are ergonomic for easier styling.



CBT1  
12-PC. DISPLAY



## HOT 'N READY COLLECTION

- Heat sensor strips change colors once they have reached the optimum styling temperature.
- Ceramic Thermal barrel inhibits bacteria levels on the brush.
- Flat vent brushes are great for styling hair without getting too hot and uncomfortable.

CBT8  
11-PC. DISPLAY



## ACCUSILVER™ CERAMIC THERMAL COLLECTION

- AccuSilver™ is a natural element with antimicrobial properties, inhibiting growth of bacteria.
- Ceramic Thermal retains heat longer than traditional thermal brushes.

CB624  
12-PC. DISPLAY



# STYLING COLLECTION



**CB600 OVAL CUSHION**  
**CB601 FLAT STYLER**  
**CB602 TUNNEL VENT**  
**CB603 12-ROW ROUND**

## ACCUSILVER™ TUXEDO STYLING COLLECTION

- AccuSilver™ nylon bristles with epoxy tips help lift hair while drying and styling.
- Ionic bristles leave hair smooth and shiny.
- Easy to hold non-slip handle.

**CB604**  
**12-PC. DISPLAY**



**CB610 OVAL CUSHION**  
**CB611 FLAT STYLER**  
**CB612 TUNNEL VENT**  
**CB613 14-ROW ROUND**

## ACCUSILVER™ ANTI-STATIC COLLECTION

- Ergonomically designed with a textured rubberized non-slip handle.
- Ideal for detangling, smoothing and grooming hair while maximizing volume.
- Ionic bristles leave hair smooth and shiny.

**CB614**  
**12-PC. DISPLAY**



**C333361 11-ROW OVAL CUSHION**  
**C333363 9-ROW TUNNEL VENT**

## BLUE ICE® BRUSH COLLECTION

- Comfortable, ergonomically designed handle massages the hand while styling.
- Oval brush is best for long hair and creating straight and smooth.
- Vent brush is designed to speed blow drying.

# BOAR BRISTLES FINISHING

Boar bristles cleanse hair while helping to distribute natural oils, creating shine and eliminating flyaway hair.



**CB650 13-ROW OVAL CUSHIONED**  
**CB651 11-ROW PADDLE**  
**CB652 7-ROW FLAT STYLER**

## BORA BORA™ FINISHING COLLECTION

- Comfortable wood handle.
- Perfect for gently grooming all hair lengths and types.

**CB653**  
**9-PC. DISPLAY**



# BOAR BRISTLES ROUNDS



## MILANO COLLECTION

- The different sizes of brushes create smooth, straight styles with full volume and/or natural wavy curls.
- Boar bristles resist static build-up and eliminate fly-away hair.

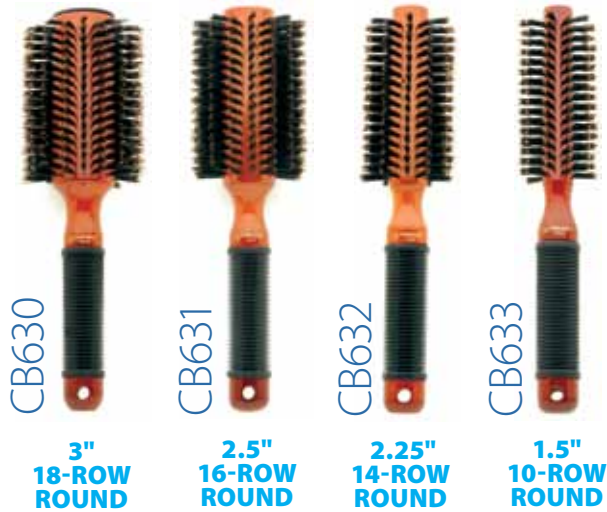
CB644  
12-PC. DISPLAY



## MASSAGE GRIP® BRUSH COLLECTION

- Tiny nodes on the handle massage the hand, providing the most relaxing, comfortable grip while styling.
- Soft boar bristles for straightening and finishing any hair style.

C333111  
12-PC. DISPLAY



## BORA BORA™ STYLING COLLECTION

- The perfect tools for straightening and styling hair.
- Rubberized handle for comfortable grip.

CB634  
12-PC. DISPLAY



# COMBS



## POPULAR ESSENTIALS CUTTING AND TAIL COMBS

All-purpose cutting and styling combs to fill every need. Crafted with Celcon®, a chemically and heat-resistant material, these combs are so durable that we guarantee them for life.



CCP303

**MIDGI 5" COMB W/ PLASTIC LIFT**



CCP102

**MARK® II COMB W/ STAINLESS STEEL LIFT**



CCP500

**8" TAIL COMB W/ MEDIUM TEETH**



CCP501

**8" TAIL COMB W/ REGULAR TEETH**



CCP510

**8" STAINLESS STEEL TAIL COMB W/ REGULAR TEETH**



CCP400

**7" WIDE-TOOTH CUTTING COMB**



CCP401

**7" REGULAR STYLING/ CUTTING COMB**

## GRIPPERS™ COMBS

Made of Celcon®, a chemically and heat-resistant material, these combs are so durable that we guarantee them for life. Non-slip handles make it easy to finish any style.



CCP352

**MARK II® COMB W/ STAINLESS STEEL LIFT**



CCP354

**STYLING COMB W/ PLASTIC LIFT**



CCP355

**COMB W/ PLASTIC LIFT & SERRATED TEETH FOR TEASING**



CCP357

**MARK V® COMB W/ STAINLESS STEEL LIFT**

## STYLING ASSISTANT COMBS

Made of Celcon® heat-resistant material with oversized teeth, these combs are ideal for detangling and styling with ease.



CCP610

**LARGE WIDE-TOOTH COMB**



CCP611

**DETANGLING COMB**



CCP301

**STYLING COMB W/ PLASTIC LIFT**



CCP105

**MARK V® COMB W/ STAINLESS STEEL LIFT & SERRATED TEETH**



CCP302

**SERRATED TOOTH COMB W/ PLASTIC LIFT**



CCP304

**MARKY 5" COMB W/ STAINLESS STEEL LIFT**



# COMBS

## ANTI-STATIC WITH BACTI-BAN® ALL-PURPOSE COMBS

Crafted with Duracon®, a special acetal copolymer, and featuring the Bacti-Ban® anti-microbial additive to reduce bacterial growth and designed to last the life of the product.



CCX102

**MARK II® COMB ANTI-STATIC W/ BACTI-BAN™**



CCX105

**MARK V® COMB ANTI-STATIC W/ BACTI-BAN™**



CCX357

**MARK V® GRIPPERS™ COMB ANTI-STATIC W/ BACTI-BAN™**

## CLIPPER COMB

Made from chemically and heat-resistant material, this comb is practically indestructible. Large handle and wide-tooth design make it ideal for fast cutting with total control.



C333015

## HARD RUBBER STYLING COMBS

Handcrafted for optimum spacing.



C333157

**8½" STYLING COMB**



C333163

**9" DRESSING COMB**



C333162

**8½" TAIL COMB**

## CARBON COMBS

Heat-resistant and static free, these rounded tipped combs are gentle on hair and scalp. Extra-long, lightweight design delivers total control and comfort.



CCP704

**9" EXTRA-WIDE TOOTH COMB W/ SECTIONING TEETH**



CCP702

**9" TAPERED CUTTING COMB**



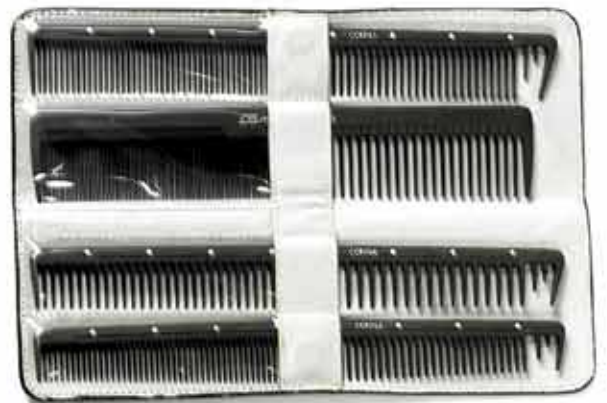
CCP703

**8½" VANITY COMB**



CCP701

**9" WIDE-TOOTH CUTTING COMB W/ SECTIONING TEETH**



CCP700

**4-PC. COMB SET WITH STORAGE/ CARRYING POUCH**





**PROFESSIONAL STYLING PRODUCTS**  
call 800.327.8384 for the distributor nearest you.

[www.belsonproducts.com](http://www.belsonproducts.com)